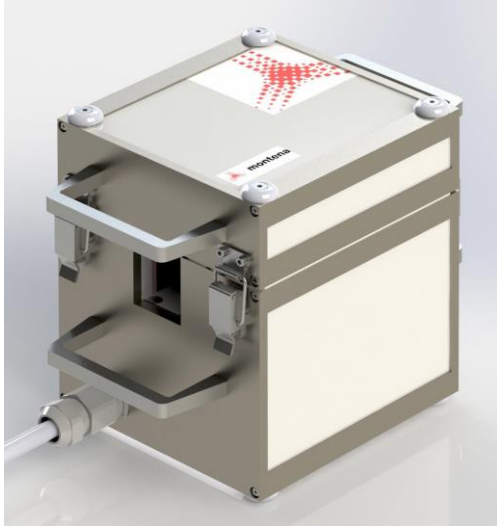




montena

Active Inductive Coupler CS106



This coupling transformer is used for the current injection of high voltage pulses according to MIL-STD 461F CS106. The probe can be opened and placed around the cable to test having maximum dimensions of 34 x 43 mm. The transformer has to be connected to the standalone generator type PG-CS106 or to the module type M-CS106 to be installed inside the POG-CS116 modular generator (see the dedicated datasheets).

SPECIFICATIONS

Type	IC10M
Standard	MIL-STD-461F / CS106
Compatible with	generator POG-CS106 module M-CS106 for POG-CS116 generator
Internal peak voltage	up to 500 V
Peak current	5 to 100 A
Repetition rate	1 to 15 pulses per second
Aperture	34 x 43 mm
Maximum current in the primary	100 A _{dc} / 75 A _{rms}
Length of the control cable	3 m
Connector	Hummel M23
Working temperature	5 - 60 °C
Dimensions	22 x 24 x 22 cm (L x H x W)
Weight	6 kg